

User Manual Time Log

119630-00

General

Battery-operated time aid for indoor use in dry environments. The delivery includes stickers in colours corresponding to the start buttons. The coloured stickers may be used to mark activity signs or schedules. For example, if an activity is to last for 4 hours, it is marked with a green sticker.

Function

Countdown of time from 8, 6, 4 or 2 hours.

The LED bar shows the countdown.

Number of lit LEDs at start	16 LEDs for 8 hours
	12 LEDs for 6 hours
	8 LEDs for 4 hours
	4 LEDs for 2 hours

One LED is going out every 30th minute until all LEDs have gone out. At the end of the counting period all LEDs are flashing, and a signal will sound 5 times to indicate that the selected time has run out. During signalling, the sound can be stopped by pressing one of the buttons.

How to use

Press the button for the requested time. The corresponding number of LEDs will light up and countdown starts. The ongoing counting period may be cancelled by pressing the red and blue start button simultaneously for two seconds. Thereafter a new counting period can be started. The sound signal may be changed with the control on the short side of the time log. With the sound control in min-position, the sound is completely turned off and signalling is made by flashing LEDs only.

Battery

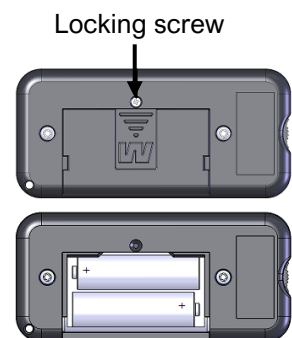
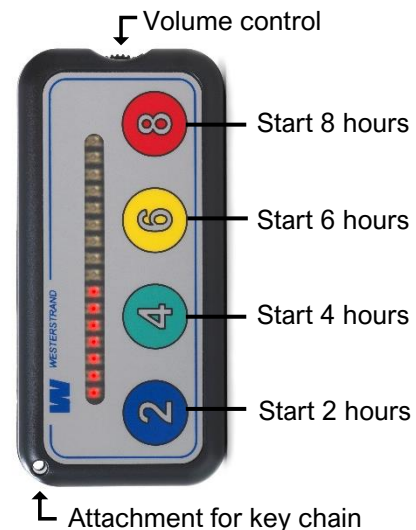
The delivery includes two 1,5 V batteries size R6. These last for approximately 60 hours of use. When the light intensity of the LEDs wears off both batteries are to be replaced. In order to install or replace batteries, the battery compartment must be opened using a screwdriver (Phillips no.1). Rechargeable batteries type NiMH, size R6 can also be used. (NiMH batteries and charger are however not supplied by Westerstrand.)

Cleaning / Maintenance / Test volume

Wipe the time log with a damp, lint free rag with common cleaner or use a cleaning cloth specifically for electronics. Change batteries as needed. If necessary, a new front decal can be pasted on to the time log. To test the volume level of the sound signal, press the two middle buttons simultaneously. The test function is turned off by pressing a button.

Option

119607-00	Key chain
119608-00	Protection case



Dimensions 111x52x27 mm Weight 115 g