



FAÇADE/TOWER CLOCKS



WESTERSTRAND URFABRIK AB

- Manufacturer of Swedish quality products for public spaces since 1906



HEAVY DUTY MOVEMENT LMV/GMV

The powerful movements can operate unprotected hands up to and including $\varnothing 4000$ mm.

Connection

The movements are connected to 230 VAC and is synchronized from a Westerstrand Master clock with 24 VDC pole– alternating minute impulses.

The impulse starts the motor, which moves the hands forward one minute. In the event of power failure the façade clock will stop but is automatically corrected by the Master clock when the power returns.

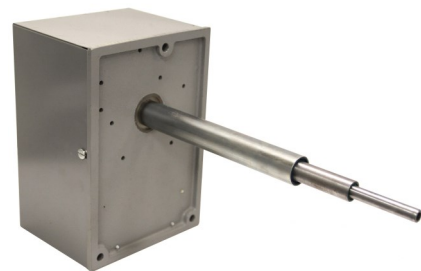
Mounting

The movements are normally mounted on the inside of the wall or recessed and the shaft length is adapted to the wall thickness. (measurements are specified when ordering).

In cases where mounting on the inside is unsuitable, there is a version for recessed mounting from the outside of the façade (LMV-50F).

Maintenance

The movement needs to be lubricated at least once a year. Movements that are mounted in particularly demanding environments can need more frequent intervals.



LMV/GMV-X



Niche hatch



LMV/GMV-UV

Option:

115050-00 Niche hatch

Lockable, supplied primed as standard.

Can also be painted in any RAL- or NCS-code as an option.

Heavy Duty Movement type LMV (max Ø2000 mm)

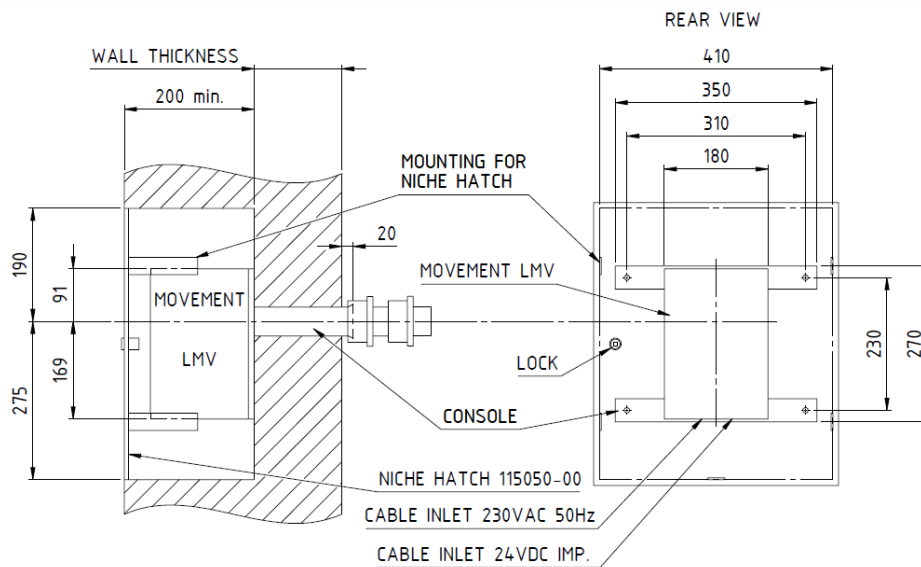
Type	Part No	Mounting	Wall thickness	Sketch
LMV-X*	115006-00	Recessed in wall / On the inside of wall	Specified by customer	1 2
LMV-50F	115000-00	Recessed in façade from the outside	-	3
LMV-UV	115014-00	1 outgoing shaft for connection to existing gear	-	-

* Incl. console

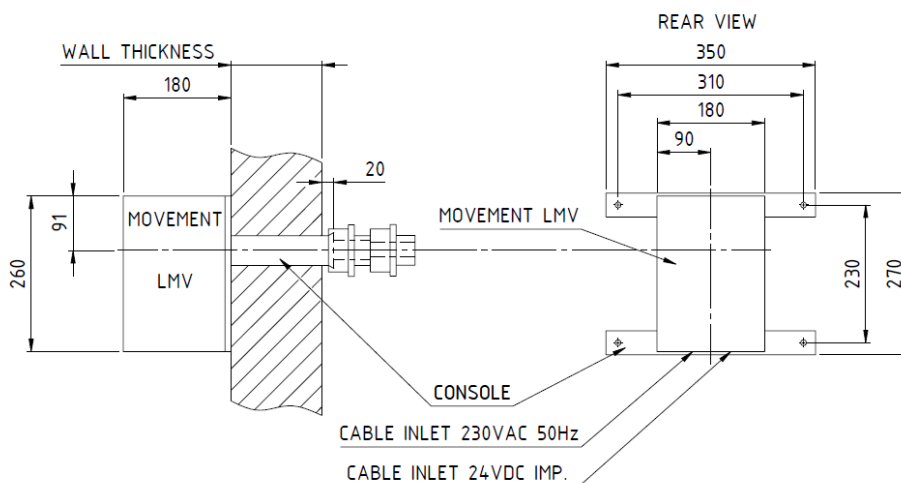
Sketch LMV Rec. drill-hole for hand shaft: Ø50 mm

1 - Recessed mounting in wall

(possible with option niche hatch)

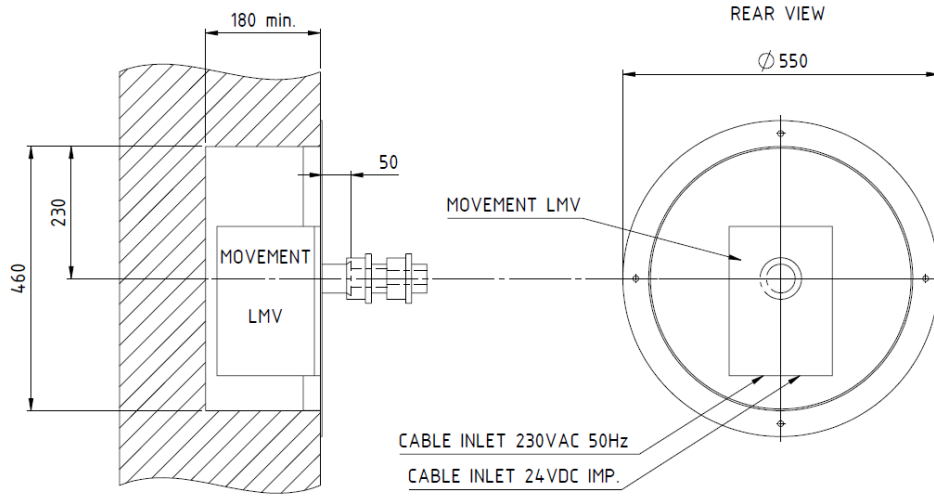


2 - Mounting on the inside of wall



Sketch LMV *cont.*

3 - Recessed mounting from the outside (incl. round cover plate*)



**The cover plate is supplied primed as standard.
Can also be painted in any RAL- or NCS-code as an option.*



Heavy Duty Movement type GMV (max $\varnothing 4000$ mm)

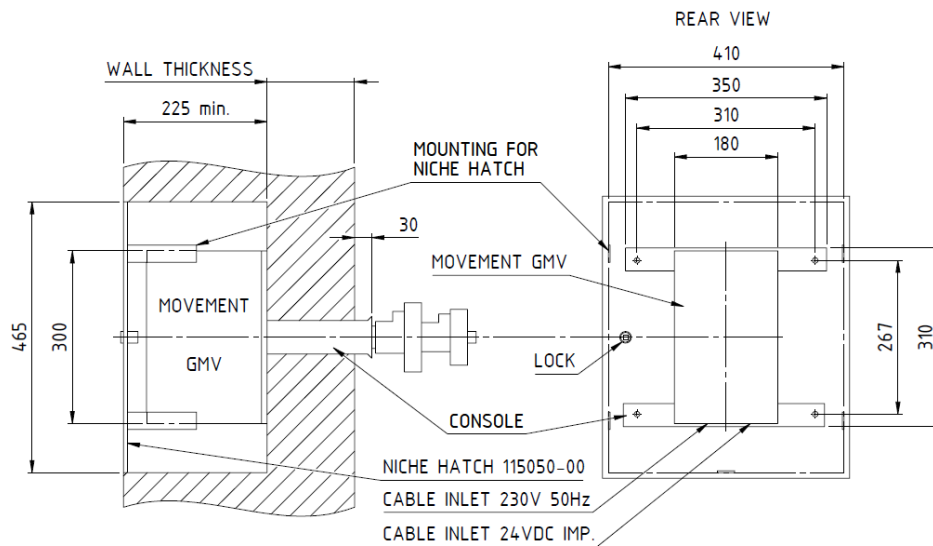
Type	Part No	Mounting	Wall thickness	Sketch
GMV-X*	115030-00	Recessed in wall / On the inside of wall	Specified by customer	4 5
GMV-Neon*	115034-00	Recessed in wall / On the inside of wall	Specified by customer	4 5
GMV-UV	115032-00	1 outgoing shaft for connection to existing gear	-	-

* Incl. console

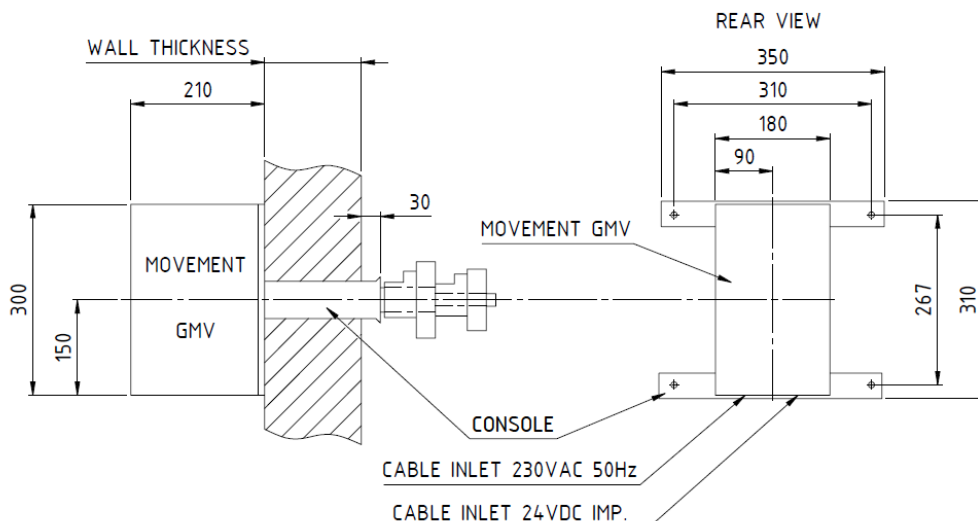
Sketch GMV Rec. drill-hole for hand shaft: $\varnothing 75$ mm

4 - Recessed mounting in wall

(possible with option niche hatch)



5 - Mounting on the inside of wall



HANDS

The hands are manufactured as standard from black or white painted aluminium. The model is straight with pointed ends. For the hands to be balanced, a "tail" is required at the back.

Illuminated hands

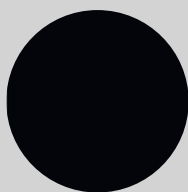
As standard, an LED strip (3000 K, warm white) is mounted on the outside of the hands unless otherwise specified. We can also offer built-in illumination in light boxes. Note! The "tails" are always unilluminated.

The illumination requires the use of the movement GMV-Neon, which with its slip rings transmits power to the illumination in the hands.

Maintenance

The hands are equipped with self-lubricating bearings and requires minimal service.

Colors



RAL 9005



NCS S 0500-N



Any RAL or
NCS code

Other designs can be offered on request



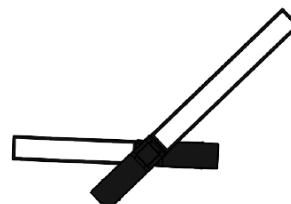
Standard design



Unilluminated hands



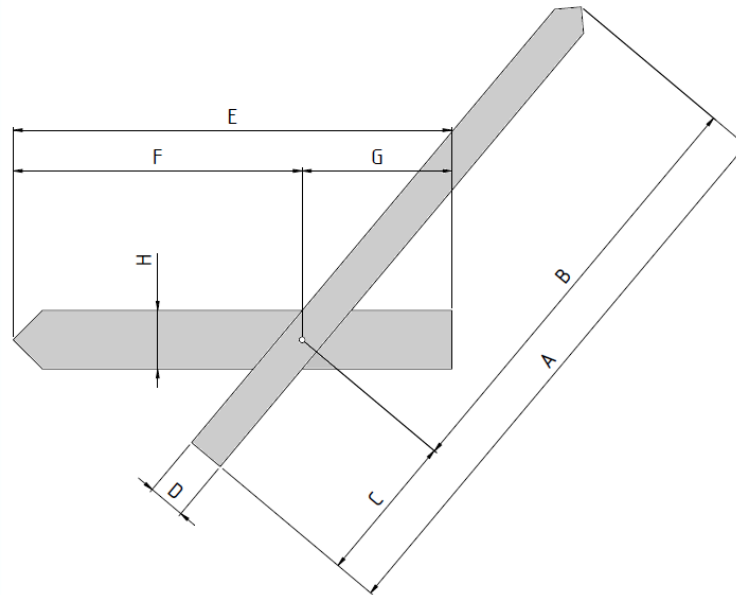
Illuminated hands
(with LED-strip)



Illuminated hands
(with light boxes)

Dimensions hands (mm)

Note! Specified dimensions are only for reference and applies to unilluminated- and illuminated hands with LED-strip.



Dial face*	MINUTE HAND				HOUR HAND			
	A	B	C	D	E	F	G	H
Ø1000	650	485	165	50	485	320	165	65
Ø1200	780	585	195	60	580	385	195	77
Ø1400	910	685	225	70	680	450	230	90
Ø1600	1040	785	265	80	775	510	265	105
Ø1800	1160	885	275	90	875	580	295	115
Ø2000	1300	975	325	95	975	640	335	130
Ø2250	1450	1100	350	95	1100	750	350	145
Ø2500	1625	1225	400	105	1200	800	400	160
Ø2750	1790	1350	440	115	1330	880	450	180
Ø3000	1950	1450	500	125	1465	965	500	195
Ø3500	2280	1700	580	140	1705	1125	580	225
Ø4000	2600	1935	665	160	1950	1285	665	250

* The diameter is calculated from the outer edge of the dial face characters.

DIAL FACE CHARACTERS

The characters are manufactured as standard from black or white painted aluminium. Just like on our regular analogue clocks, the characters can be manufactured as hour marks or numbers (Westerstrand standard font unless otherwise stated)

Ring

To make assembly easier, we recommend that the characters are pre-assembled on a ring. The ring can, for example, be painted in the same color as the façade.

Illuminated characters

On the hour marks, an LED strip (3000 K, warm white) is mounted on the outside as standard. Numbers and other designs are offered with built-in illumination in light boxes.

All illuminated characters are mounted on a ring for easier wiring. The illumination also requires a separate 230 VAC supply.

Colors



RAL 9005



NCS S 0500-N

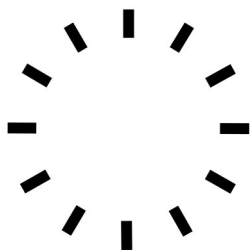


Any RAL or
NCS code

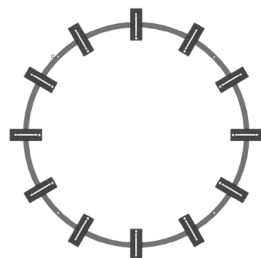
Other designs can be offered on request



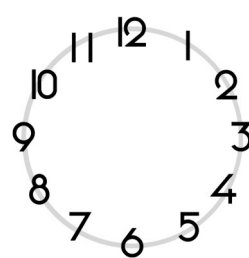
Standard design



**Unilluminated
hour marks**



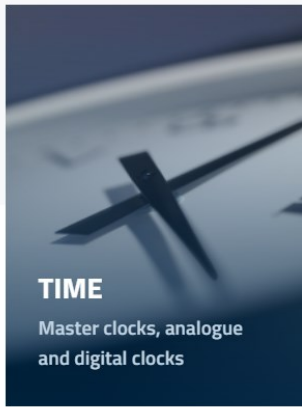
**Illuminated hour marks
on ring**
(with LED-strip)



**Unilluminated numbers
on ring**
(standard font)

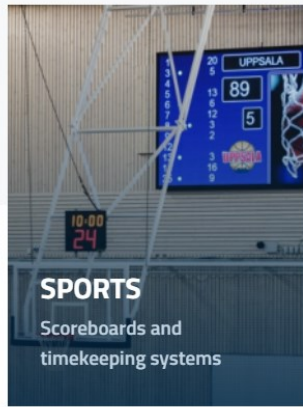


**Illuminated numbers
on ring**
*(with light boxes
and standard font)*



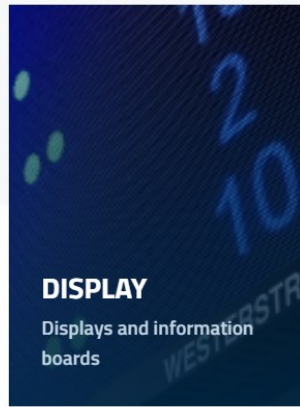
TIME

Master clocks, analogue and digital clocks



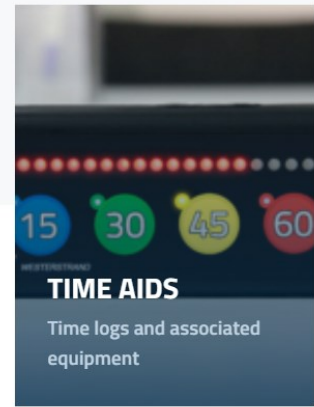
SPORTS

Scoreboards and timekeeping systems



DISPLAY

Displays and information boards



TIME AIDS

Time logs and associated equipment

TIME

We are one of Europe's largest manufacturer of synchronized time systems. Our products are used everywhere where time is an important factor, for example, at airports, railways and hospitals.

SPORT

We manufacture products for results and timing. In addition to traditional scoreboards, we also supply video screens along with our software for sports and event halls.

DISPLAY

Information boards of different types, for example, entrance signs, production displays, petrol signs, queue displays and time/temp displays.

TIME AIDS

The Time log is an aid that helps to structure everyday routines if you have difficulty perceiving the time as it is traditionally shown on clocks.



WESTERSTRAND URFABRIK AB

Box 133, 545 23 Töreboda, Sweden

Tel. +46 (0)506-480 00

info@westerstrand.se

www.westerstrand.se

